

Le reti europee

Una selezione di reti suggerite suddivise per settori ERC



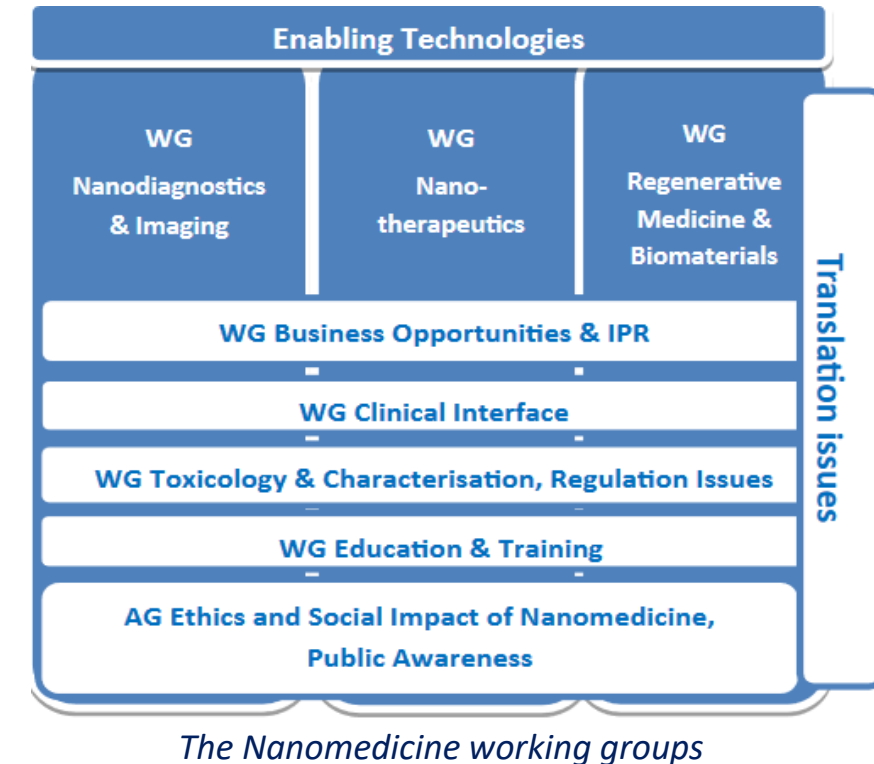
The [ETP Nanomedicine](#) is an initiative led by industry and set up together with the European Commission. The members of the ETPN are stakeholder organisations in the field of Nanomedicine including large industry, SMEs, industrial associations, research institutions, academia, hospitals and others. It is addressing the application of **nanotechnology** to achieve breakthroughs in healthcare and to bring real benefits to patients in the shortest time possible time

The research priorities of the ETP Nanomedicine are focussed on:

- Regenerative Medicine and Biomaterials
- Nanotherapeutics
- Nanodiagnostics and Imaging

Being a member of the ETP Nanomedicine is essential to have unlimited access to its **working groups** and to participate in informed debates on developments and on **European Commission decisions**.

[How to become member](#) of Nanomedicine



Annual Membership Fee 1000 €



The [Bio-based Industries Consortium](#) (BIC) is a non-profit organisation set up in Brussels in 2012. BIC represents the private sector in a public-private partnership (PPP) with the EU, represented by the European Commission, known as the Bio-based Industries Joint Undertaking (BBI JU) and dedicated to transforming renewable, natural resources into innovative bio-based products.

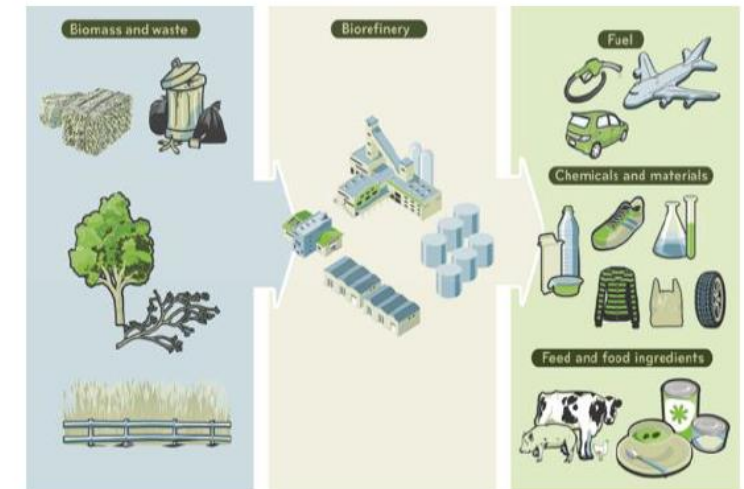
A University can participate as BIC Associate Members: legal entities that have an interest in the activities of the BIC, but are not bio-based industries per se. Associate Members enjoy the following rights:

- participating in the General Assembly, without voting rights, upon specific invitation by BIC Chairperson;
- participating in Working Groups on invitation by the Chair;
- contributing to Programming Taskforces and stakeholders consultations.

[How to become associate member](#) of a Working Group

A unique mix of sectors

- Agriculture & Agri-food
- Aquaculture
- Forestry / Pulp and Paper
- Chemicals and Materials
- Biotechnology and technology providers
- Energy and Biofuels
- End-users

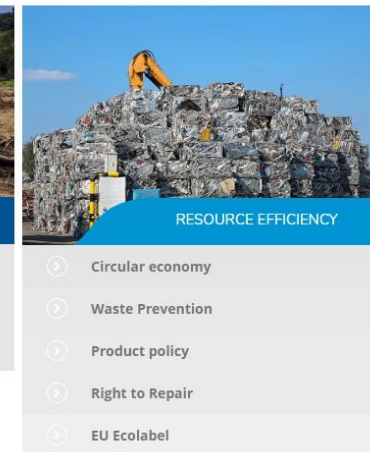
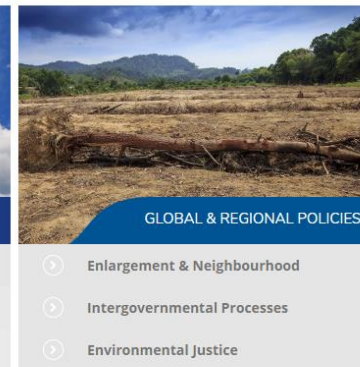
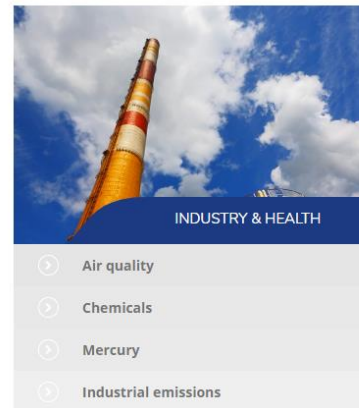
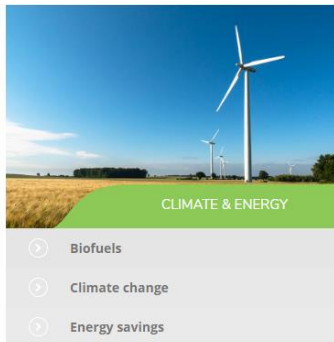
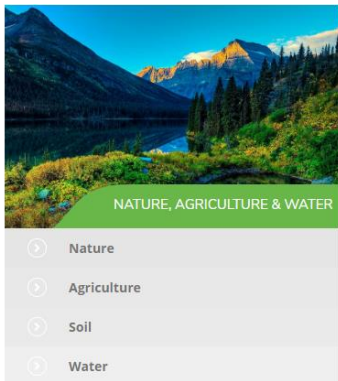


Annual Membership Fee 1000 €



The European Environmental Bureau is the largest network of environmental citizens' organisations in Europe. The EEB is the **environmental voice** of its members and European citizens. It focuses on influencing EU policymaking and implementation and assessment of its agreed policies. It aims to be effective by combining knowledge with representativeness, active involvement of its members and coalition building. EEB main issues are: **climate change, biodiversity, circular economy, air, water, soil, chemical pollution**, as well as policies on industry, energy, agriculture, product design and **waste prevention** among others.

The EEB have a dedicated Working Group for many of the environmental issues that we cover. Most Working Groups meet once or twice a year to develop EEB policies and strategies and for debates with policy makers and invited experts. The **EEB Working Groups play a central role in the daily work** of the EEB. They are the primary forum through which EEB members collaborate with each other on substantive issues.



[How to become member](#) of EEB

Annual Membership Fee 2000 €



AN INDUSTRY-LED THINK-TANK OF EUROPEAN HPC TECHNOLOGY STAKEHOLDERS

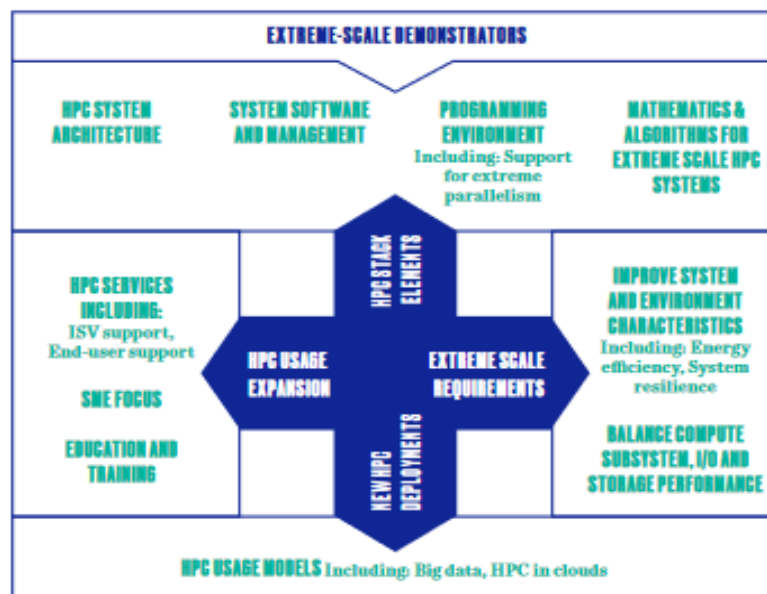
ETP4HPC is the European Technology Platform (ETP) in the area of High-Performance Computing (HPC). It brings together technology vendors, research centres, ISVs, service providers and end-users. ETP4HPC was launched in October 2011.

WHAT WE DO

- Foster growth of HPC technology Research and Development in Europe
- Advise the EC through a structured dialogue (cPPP)
- Define multi-annual roadmaps (Strategic Research Agendas – SRA)
- Propose H2020 Work Programme contents
- Monitor ecosystem development
- Act as the “one voice” of the European HPC industry in relation with the European Commission and national authorities.

STRATEGIC RESEARCH AGENDA

The ETP4HPC Strategic Research Agenda (SRA) is our key deliverable. It outlines a multi-annual and periodically updated roadmap for the achievement of both extreme scale and pervasive capabilities by the European High-Performance Computing (HPC) ecosystem. The SRA contributes to the cPPP dialogue and is used to define the contents of the HPC Technology R&D Work Programmes managed by the European Commission in H2020.



How to become a member of ETP4HPC

❑ Full (active) members

Any organisation which carries out significant research and development activities in the field of HPC technology in Europe (e.g. EU-based or international corporate organisations, SMEs or research organisations).

❑ Associated members

Any organisation with activities related to HPC technology is welcome to become an Associated Member.

Annual Membership Fee
Full 3000 €
Associate 2000 €

The [Innovative built environment Platform](#) (ECTP) was launched by the construction sector in October 2004 to develop new R&D&I strategies to improve competitiveness, meet societal needs and take up environmental challenges. It gathers around 150 member-organizations from the whole supply chain of the Built Environment.

ECTP has the following objectives:

- Driving innovation and change through research. To help create a better future for the Built Environment industry in Europe.
- Informing and influencing Research and Innovation investment in Europe.
- Supporting collaboration and helping mobilise expertise in the Built Environment.

COMMITTEES



ACTIVE AGEING & DESIGN
AN ECTP COMMITTEE



ENERGY EFFICIENT BUILDINGS
AN ECTP COMMITTEE



HERITAGE & REGENERATION
AN ECTP COMMITTEE



INFRASTRUCTURE & MOBILITY
AN ECTP COMMITTEE



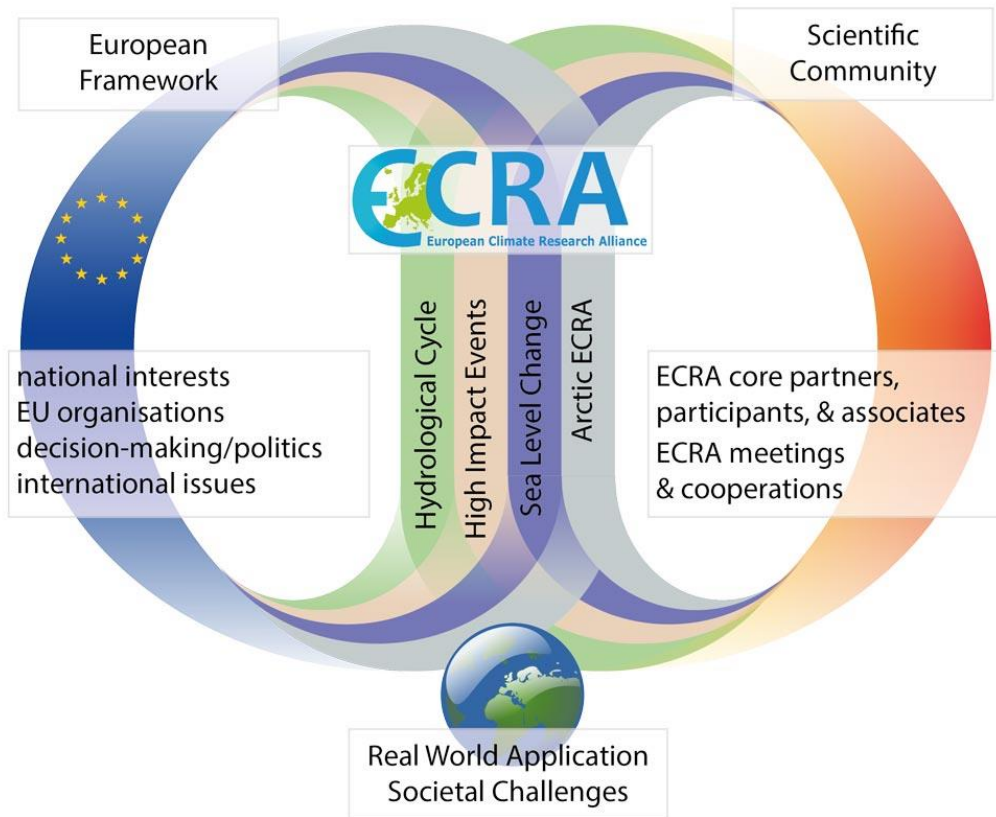
MATERIALS & SUSTAINABILITY
AN ECTP COMMITTEE

[How to become member](#)

Annual fee 3000 €



The overall objective of the [European Climate Research Alliance \(ECRA\)](#) is to strengthen, expand and optimise EU climate research capabilities to advance the understanding of climate variability, predictability and change. ECRA shapes emerging research topics through an efficient network of European research performing organisations and provides a knowledge base for future mitigation and adaptation measures.



ECRA's core activities are represented in four Collaborative Programmes:

- Arctic Climate Stability and Change
- Sea Level Change and Coastal Impacts
- High Impact Events and Climate Change
- Changes in the Hydrological Cycle

[How to become a member.](#)

European research institutions can become officially an ECRA Member: Partner, Participant, or Associate (different fees)

Different level of membership and fees



european consortium for political research

The [European Consortium for Political Research \(ECPR\)](#) is a membership association for scholarly institutions, their staff and students, engaged in teaching and research of political science and its related disciplines worldwide. Over 14,000 individuals from more than 300 institutions in some 44 countries worldwide – ECPR has the largest network of political scientists in the world. Members can access these networks through events and publications but more formally also through joining (or convening) a Standing Group – formalised research networks that cover the full spectrum of sub-fields.

[How to become a member](#)

The ECPR operates two membership types: Full Member and Associate Member. Full Membership is open to those institutions based in the UK and Europe; Associate Membership is open to those outside of these regions.

Annual Membership Fee 2370 €



The [European Association for Digital Humanities \(EADH\)](#) brings together and represents the Digital Humanities in Europe across the entire spectrum of disciplines that research, develop, and apply digital humanities methods and technology. The main goal of EADH is to support its individual members by

- representing the interests of the DH community in Europe and beyond
- collecting and distributing DH information
- organizing conferences and workshops
- building networks and regional or interest based organizations across Europe
- providing grants for smaller research projects or events and bursaries for young scholars.

[How to become a member](#)

Membership maybe direct, through the subscription to DSH, The Journal of Digital Scholarship in the Humanities Associate Organizations or by joining the organizations that are already formally liaised to EADH (the Italian organization part of EADH is [AIUCD](#) - *Associazione Informatica Umanistica e Cultura Digitale*).

Direct Membership Fee 139 €





The [European Green Vehicles Initiative](#) is a contractual Public Private Partnership (cPPP) dedicated to delivering green vehicles and mobility system solutions of the future which match the major societal, environmental and economic challenges. Launch in 2013, as part of the “Smart, Green and Integrated Transport” challenge of Horizon 2020. The European Green Vehicles Initiative is following a system approach to tackle the challenge of decarbonisation of road transport, and contribute to the transition to greener road transport, while boosting the innovative strength and competitiveness of the European economy.

[How to become a member](#)

For becoming full member, interested research organizations must fill-in an application form and then submit the form to the General Assembly for approval (more information on how to join the PPP are contained in the Statute).

Annual membership Fee 2000 €

